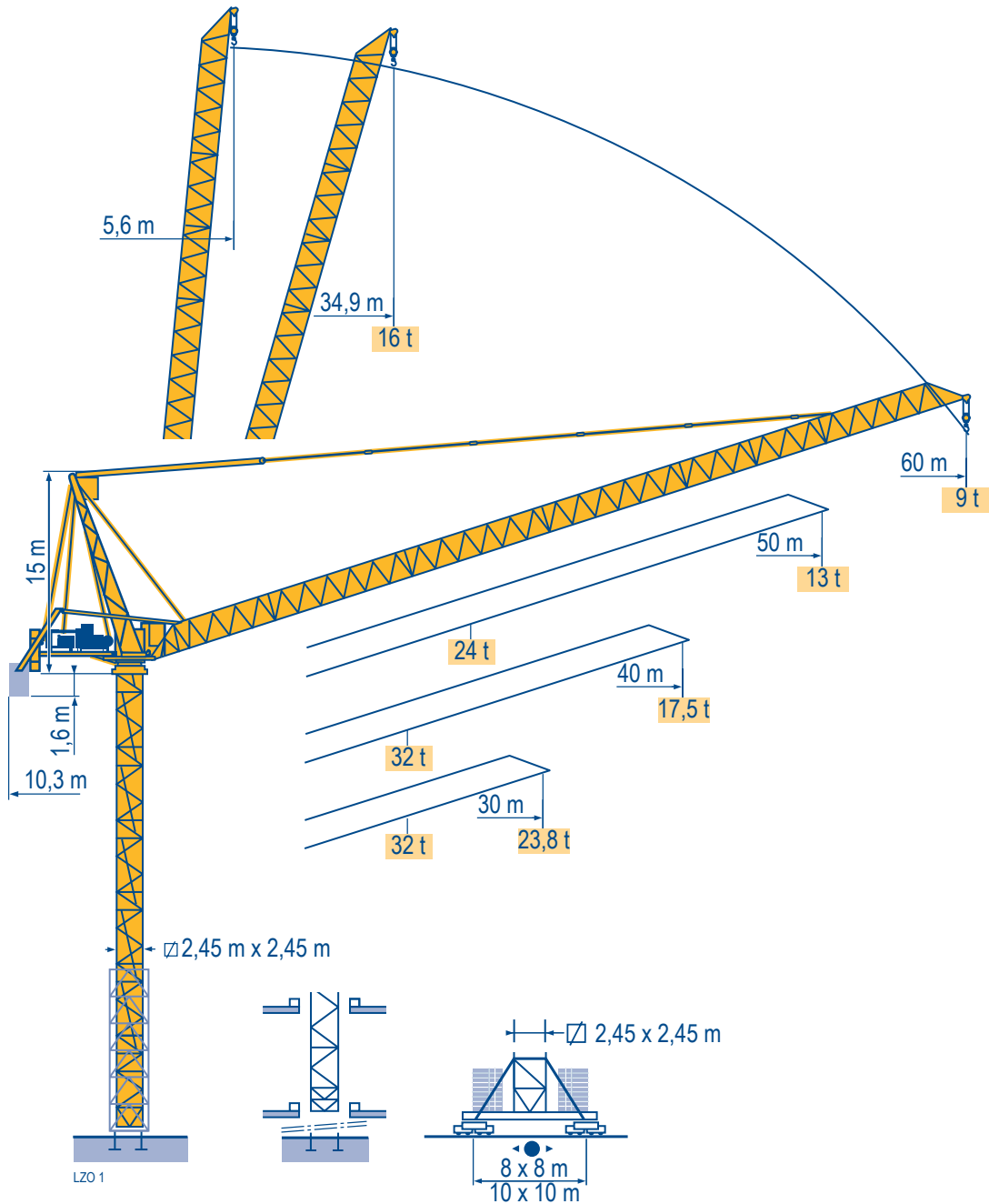
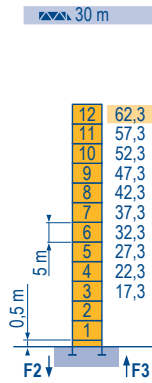


MR 605 B H32



Mat / Réactions \square 2,45 m
 Maste /
 Eckdrücke 30 m \Rightarrow 60 m
 Masts /
 Reactions
 Mástil /
 Reacciones
 Torre / Reazioni
 Tramo /
 Reacções

LZ02



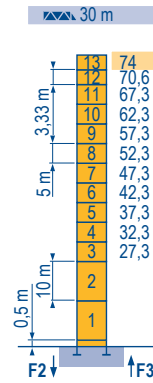
Mat	H (m)	5 m	3,33 m
40 - 50 m	59	10	2
60 m	60,6	11	1

P 800 A

F2 ● 289 t
 ■ 351 t

F3 ● 199 t
 ■ 259 t

▲ 122 t



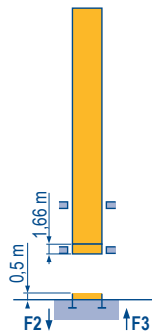
Mat	H (m)	10 m	5 m	3,33 m
40 - 50 - 60 m	72,3	2	10	-

P 850 A

F2 ● 324 t
 ■ 490 t

F3 ● 228 t
 ■ 392 t

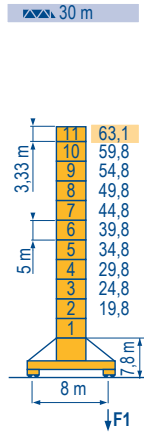
▲ 134 t



B 800 B

● 1

30 m \Rightarrow 60 m

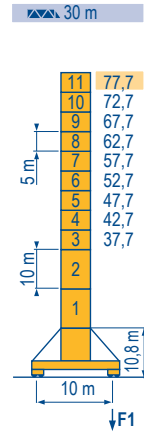


Mat	H (m)	5 m	3,33 m
40 - 50 m	58,1	9	1
60 m	61,4	9	2

Y 800 A

F1 ● 195 t
 ■ 182 t

▲ 158 t



Mat	H (m)	10 m	5 m	3,33 m
40 - 50 m	74,4	2	7	2
60 m	76,1	2	8	1

J 850 A

F1 ● 178 t
 ■ 226 t

▲ 185 t

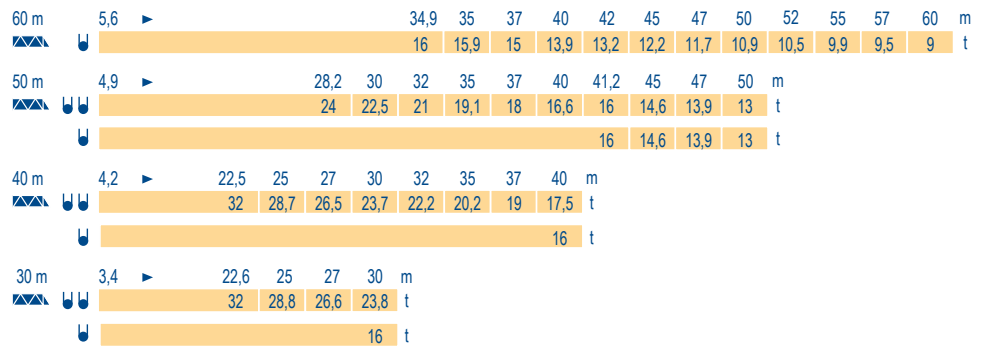
MR 605 B H32



F	D	GB	E	I	P
● Réactions en service	● Reaktionskräfte in Betrieb	● Reactions in service	● Reacciones en servicio	● Reazioni in servizio	● Reacções em serviço
■ Réactions hors service	■ Reaktionskräfte außer Betrieb	■ Reactions out of service	■ Reacciones fuera de servicio	■ Reazioni fuori servizio	■ Reacções fora de serviço
▲ A vide sans lest (ni train de transport) avec flèche et hauteur maximum.	▲ Ohne Last, Ballast (und Transportachse), mit Maximalausleger und Maximalhöhe.	▲ Without load, ballast (or transport axles), with maximum jib and maximum height.	▲ Sin carga, sin lastre, (ni tren de transporte), flecha y altura máxima.	▲ A vuoto, senza zavorra (ne assali di trasporto) con braccio massimo e altezza massima.	▲ Sem carga (nem trem de transporte)- sem lastro com lança e altura máximas.
● Nous consulter	● Auf Anfrage	● Consult us	● Consultarnos	● Consultateci	● Consultar-nos

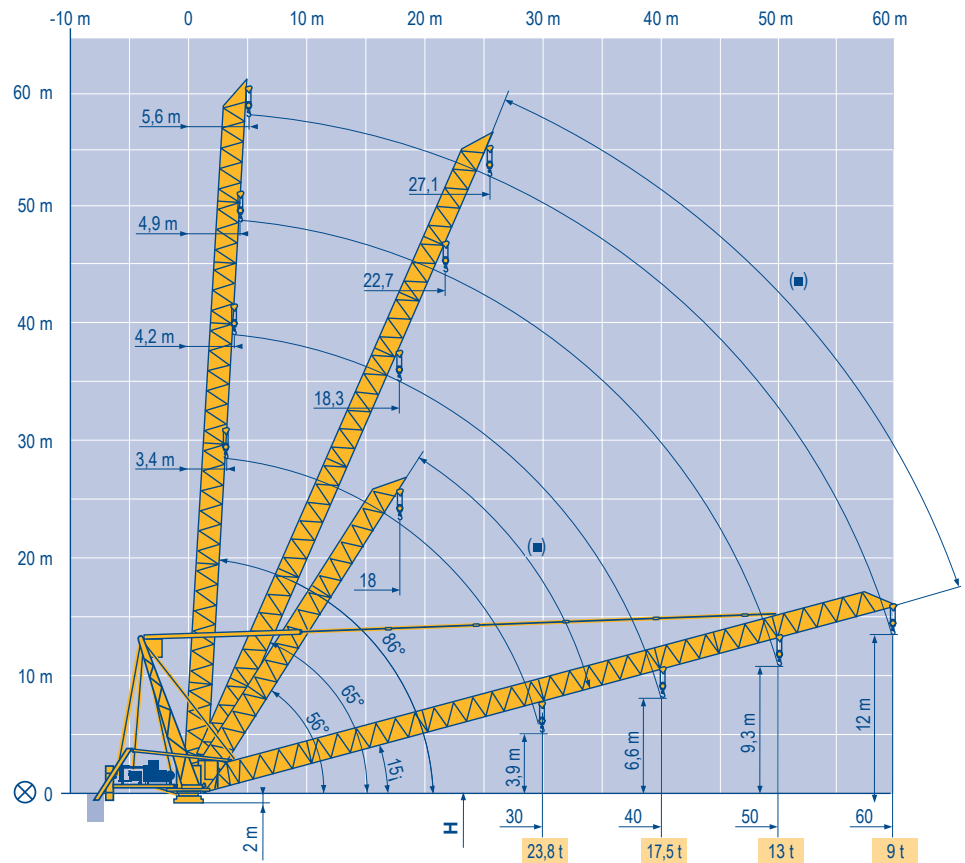
Courbes de charges
 Lastkurven
 Load diagrams
 Curvas de cargas
 Curve di carico
 Curva de cargas

LZ01



Flèche relevée
 Ausleger in Steilstellung
 Luffing jib
 Flecha izada
 Braccio impennato
 Lança inclinada

LZ01



MR 605 B H32

POTAIN



F
 Axe articulation flèche
 Position girouette

D
 Ausleger-gelenkachse
 Windfreistellung

GB
 Jib hinge shaft
 Weathervaning position

E
 Eje articulación de flecha
 Posición eleta

I
 Asse cerniera braccio
 Libera rotazione

P
 Eixo de articulação da lança
 Posição em catavento

Mécanismes
Antriebe
Mechanisms
Meccanismi
Mecanismos

LZO 2

MR 605 B H32 50 Hz											ch - PS hp	kW		
	180 LBR 80 L 1090	m/min t	3,8/38 16	6/60 10,1	9,5/95 5,9	15,2/152 3,25	1,9/19 32	3/30 20,2	4,75/47,5 11,8	7,6/76 6,5	180	132	1090 m	
	90 VBR		3 min 17 s									90	66	
	R - 13,2	tr/min U/min rpm	0 → 0,67									3 x 6	3 x 4,4	
	Y 800 A J 850 A	m/min												
CEI 38			IEC 38				kVA							
400 V (+6% -10%) 50 Hz			270 kVA											

MR 605 B H32 60 Hz											ch - PS hp	kW		
	215 LBR 80 L 1090	m/min t	4,6/46 16	7,2/72 10,1	11,4/114 5,9	18,2/182 3,25	2,3/23 32	3,6/36 20,2	5,7/57 11,8	9,1/91 6,5	215	158	1090 m	
	108 VBR		2 min 44 s									108	79	
	R - 15,8	tr/min U/min rpm	0 → 0,8									3 x 7,2	3 x 5,3	
	Y 800 A J 850 A	m/min												
CEI 38			IEC 38				kVA							
480 V (+6% -10%) 60 Hz			325 kVA											

F

Levage
Relevage
Orientation
Translation

D

Heben
Ausleger-Einziehen
Schwenken
Kranfahren

GB

Hoisting
Luffing
Slewing
Travelling

E

Elevación
Elevación de flecha
Orientación
Traslación

I

Sollevamento
Brandeggio
Rotazione
Traslazione

P

Elevação
Inclinação da lança
Rotação
Translação



Document commercial non contractuel. Pour toute information technique se référer à la notice correspondante.

Unverbindliches Vertriebsdokument. Für technische Informationen, siehe die entsprechenden Anweisungen.

This commercial document is not legally binding. For any technical information, please refer to the corresponding instructions.

Documento comercial no contractuel. Para cualquier información técnica, ver la noticia correspondiente.

Documento commerciale non vincolante, per tutte le informazioni tecniche fare riferimento al catalogo istruzioni.

Documento comercial não contractuel. Para qualquer informação técnica complementar consultar as respectivas instruções.

Manitowoc
Crane CARE

POTAIN
Manitowoc Crane Group



Americas

Tel : +1 888 479 7278
Tel : +1 717 593 2000

Europe - Middle East - Africa

Tel : +33 (0) 4 72 81 50 00
Tel : +44 (0) 191 522 2000

Asia - Pacific

Tel : +65 6264 1188
Fax : +65 6862 4040

www.manitowoccrane.com

18, rue de Charbonnières - B.R.173
69132 ECULLY Cedex - France

Tél. : +33 (0) 4 72 18 20 20
Fax. : +33 (0) 4 72 18 20 00
www.manitowoccrane.com

MR 605 B H32

Code E-89985-01_Réf. 2003 48 LZO 4

Copyright.Reproduction interdite © POTAIN 2003